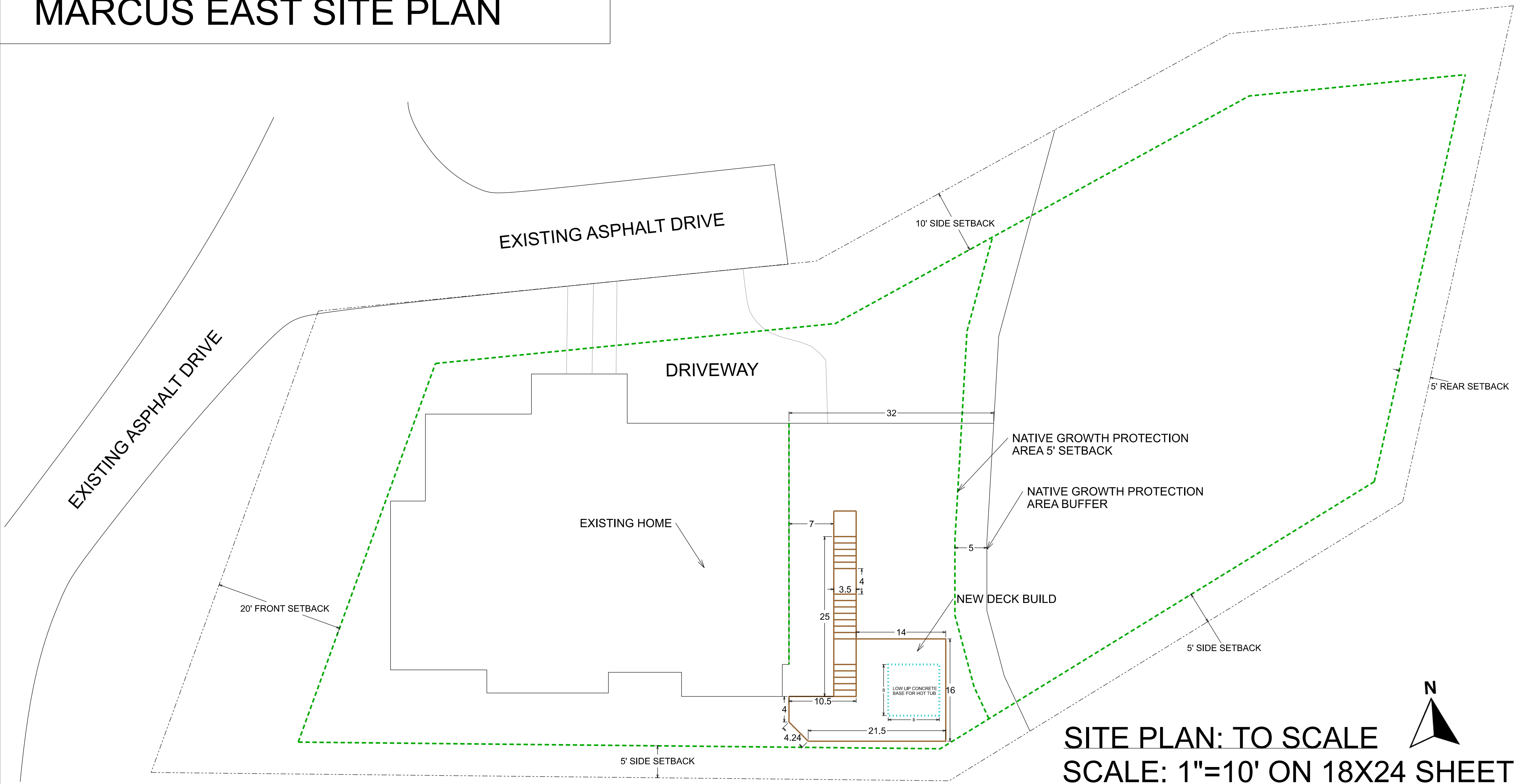


# MARCUS EAST SITE PLAN



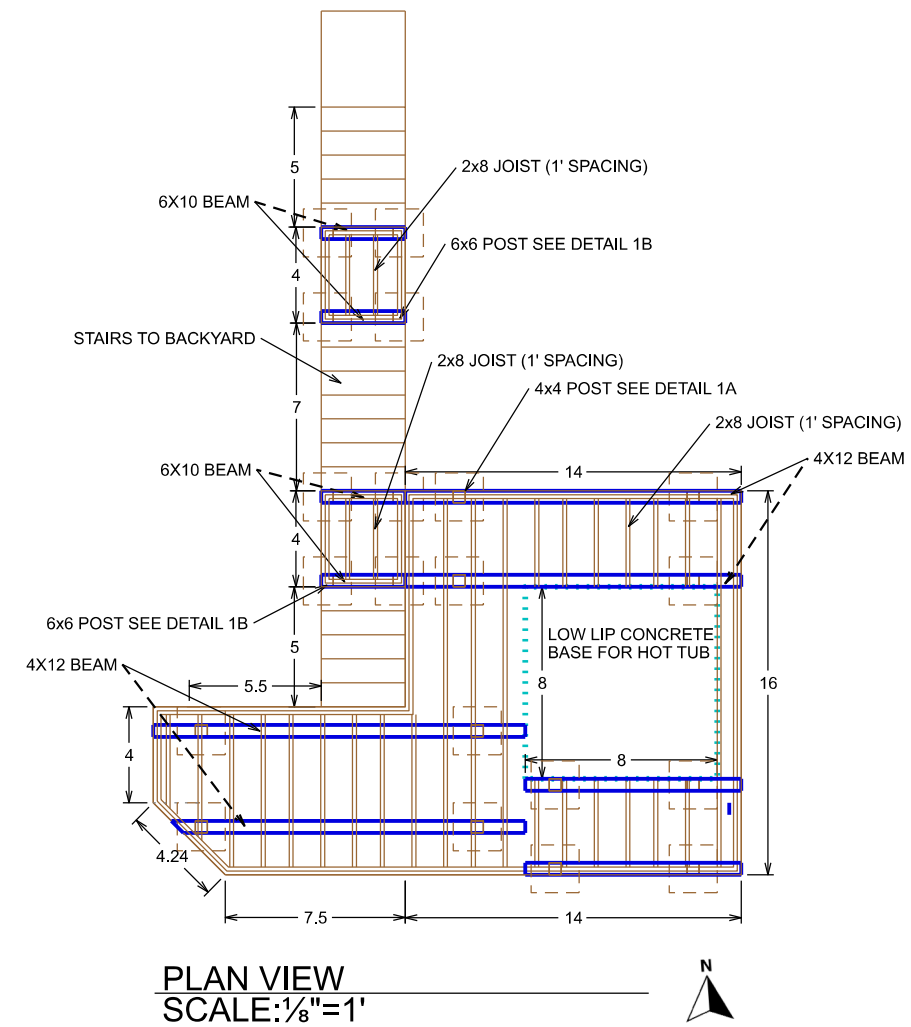
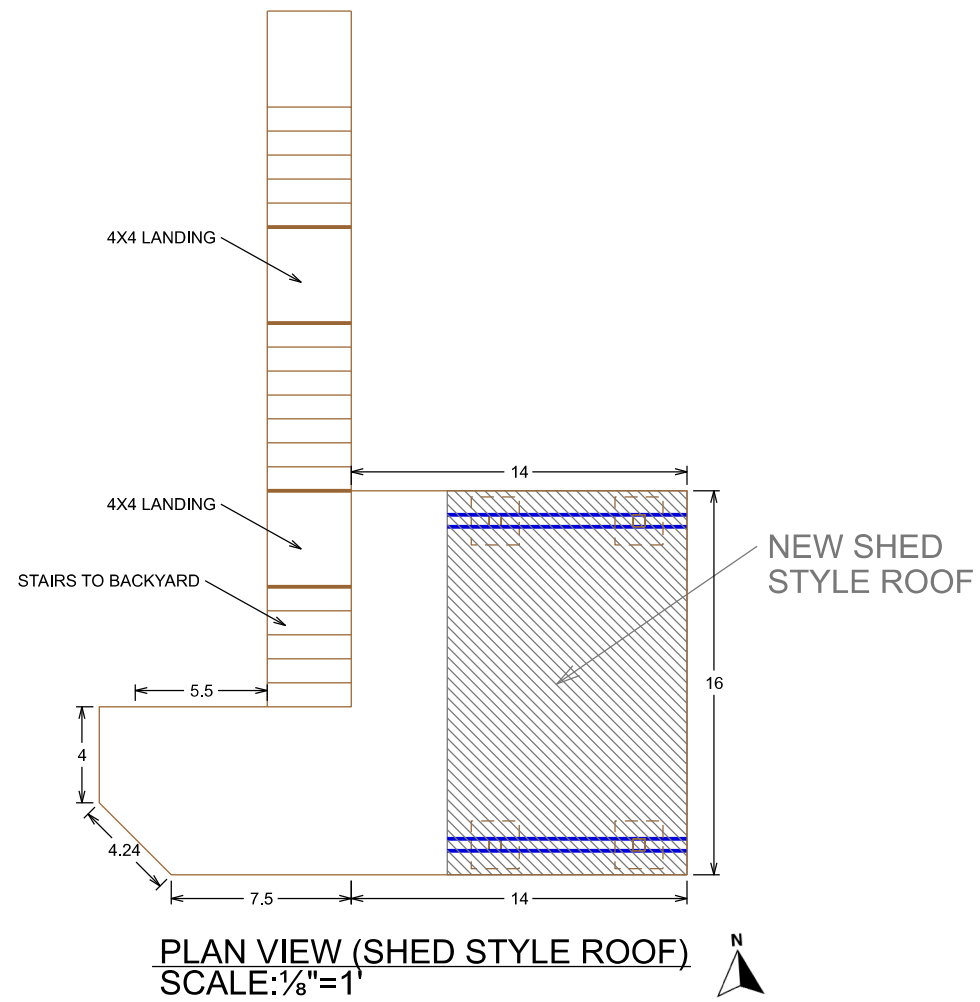
**SITE PLAN: TO SCALE**  
**SCALE: 1"=10' ON 18X24 SHEET**



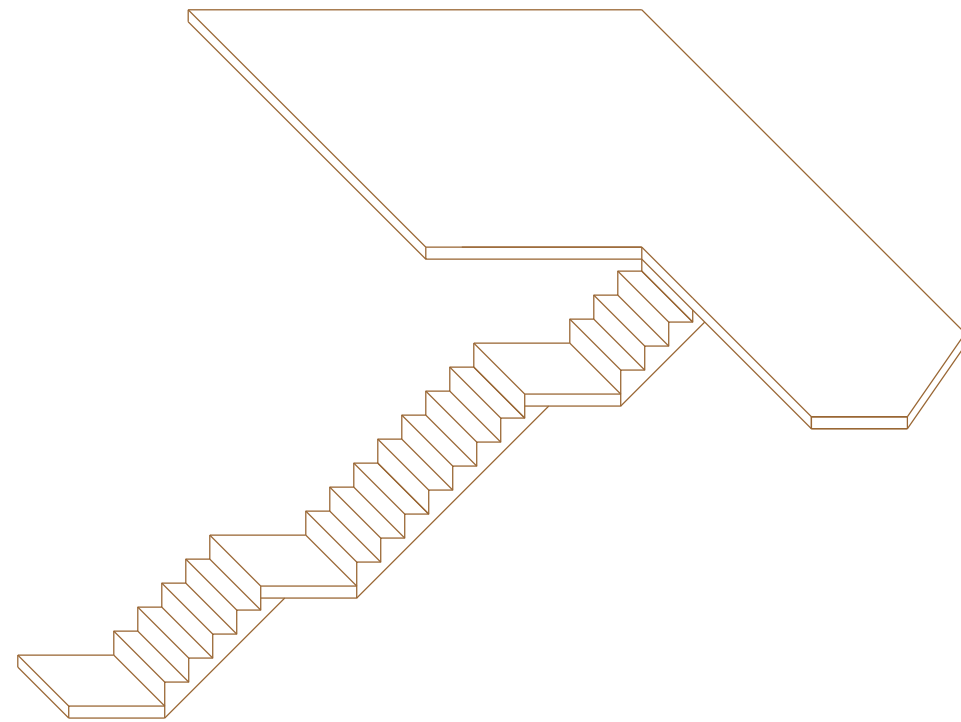
<b>MARCUS EAST DECK</b> 5202 Forest Ave SE Mercer Island, WA 98040				
PARCEL NUMBER 7430500301	LOT 6,539	LOT 6,539	RESIDENCE 1,190	RESIDENCE 1,190
DRAWN BY: RACHEL GRANT	GARAGE 420	GARAGE 420	OPEN PORCH 120	
SCALE 1"=10'	EXISTING DECK 240			
REV. DATE 01/08/2023	NEW DECK 330			



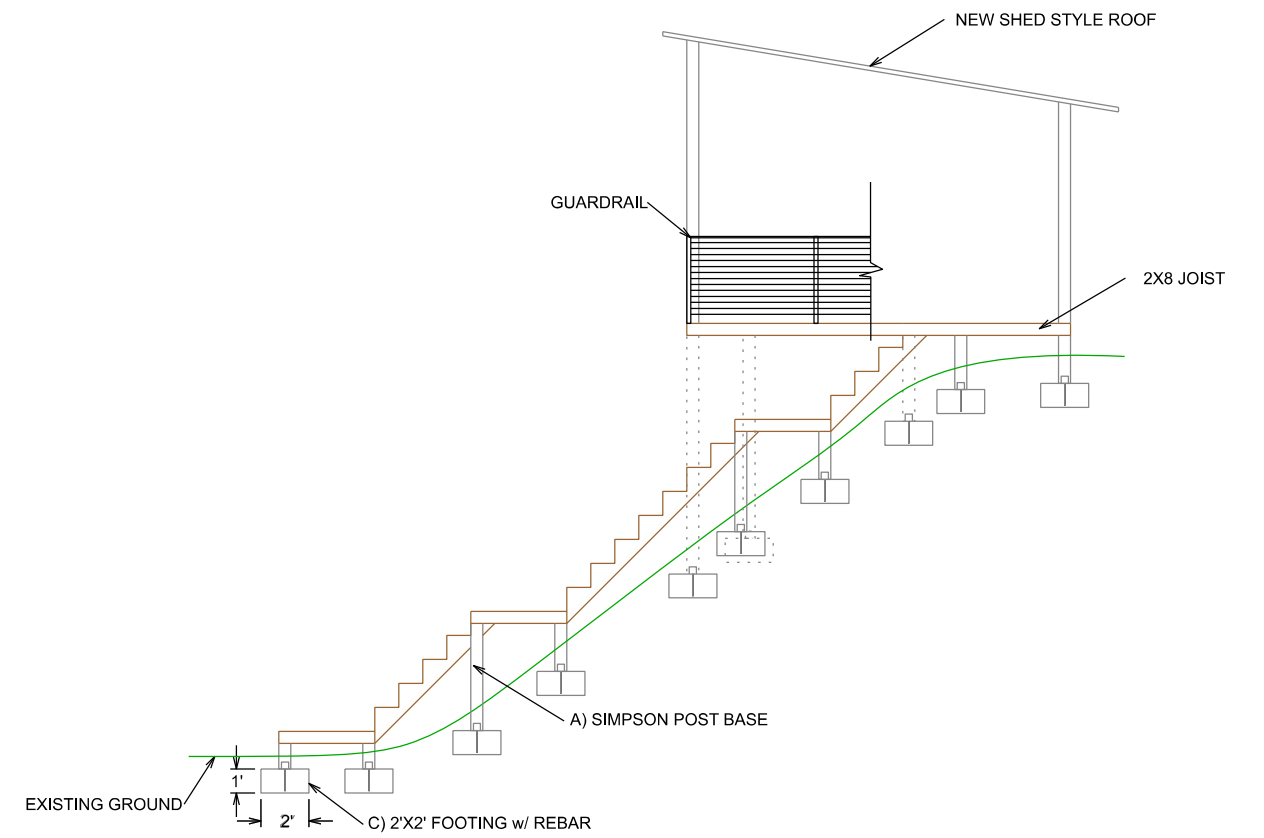
# PLAN VIEW



# PROFILE VIEW

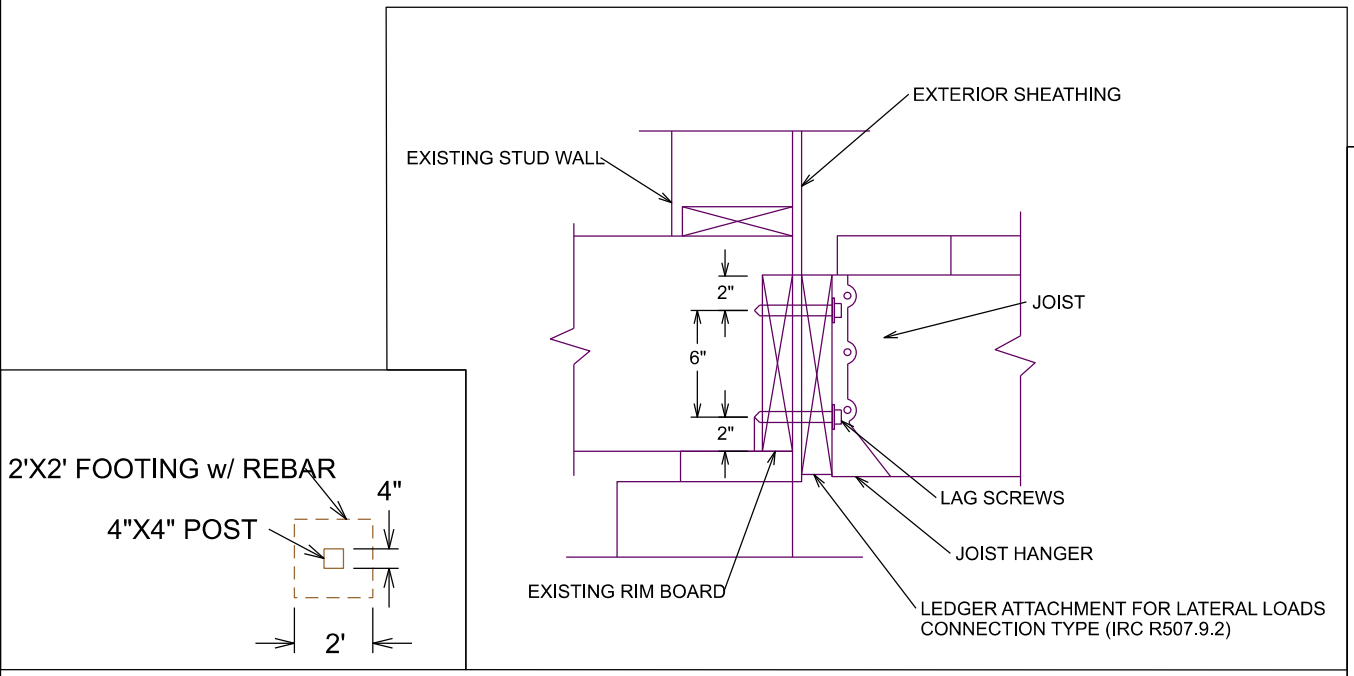


3-D VIEW  
SCALE: 1/8"=1'

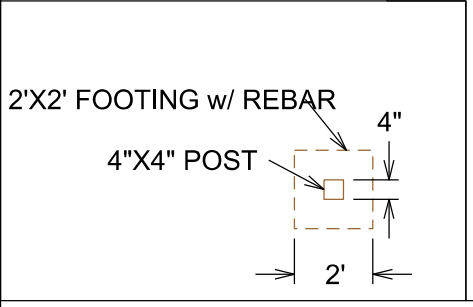


PROFILE VIEW  
SCALE: 1/8"=1'

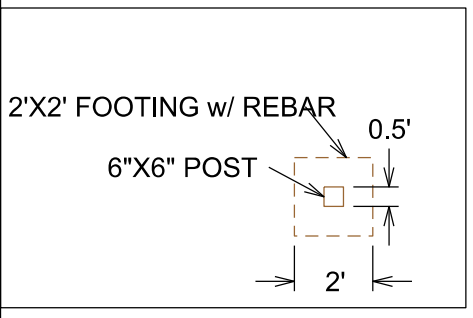
# DETAILS



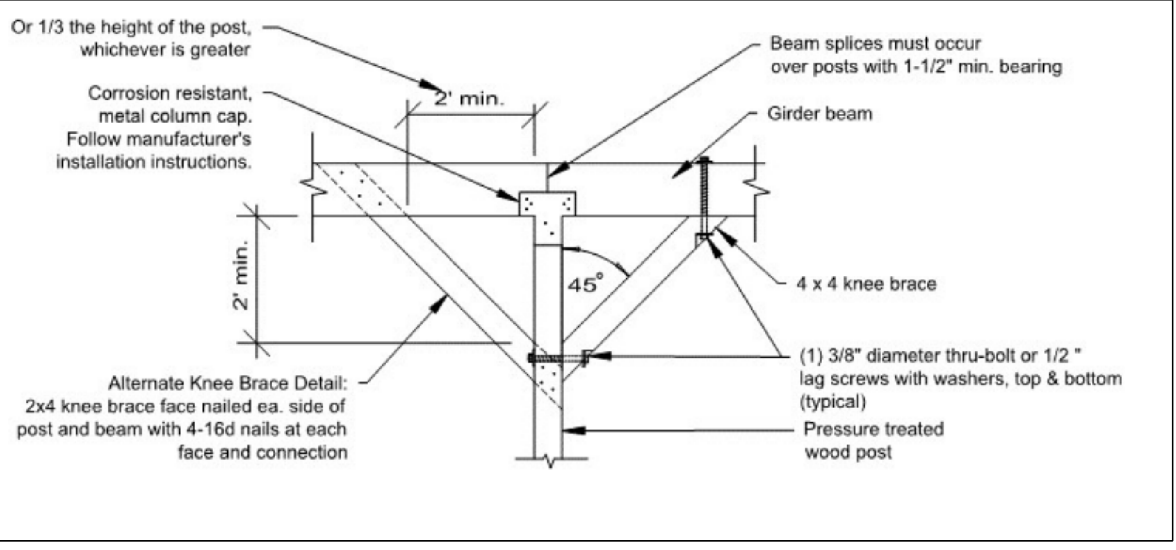
**DETAIL 2: DECK TO HOUSE CONNECTION**  
NOT TO SCALE



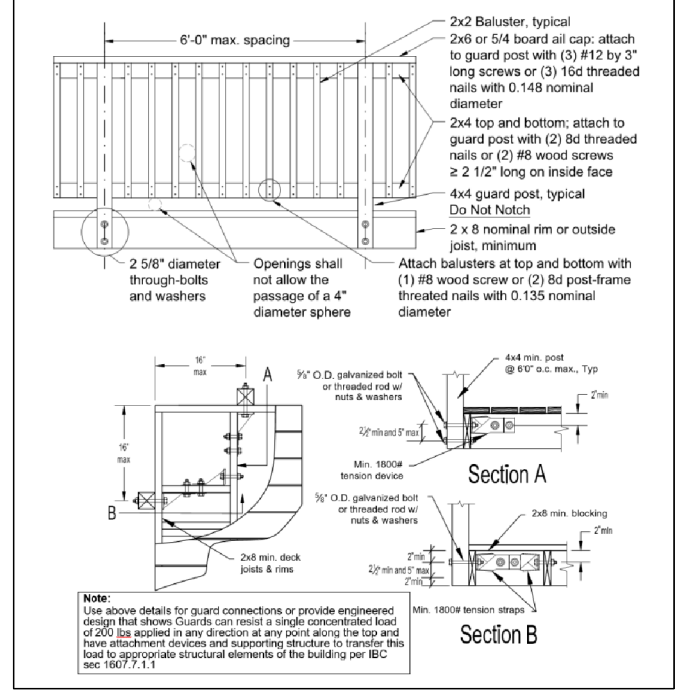
**DETAIL 1A: FOOTING AND POST**  
NOT TO SCALE



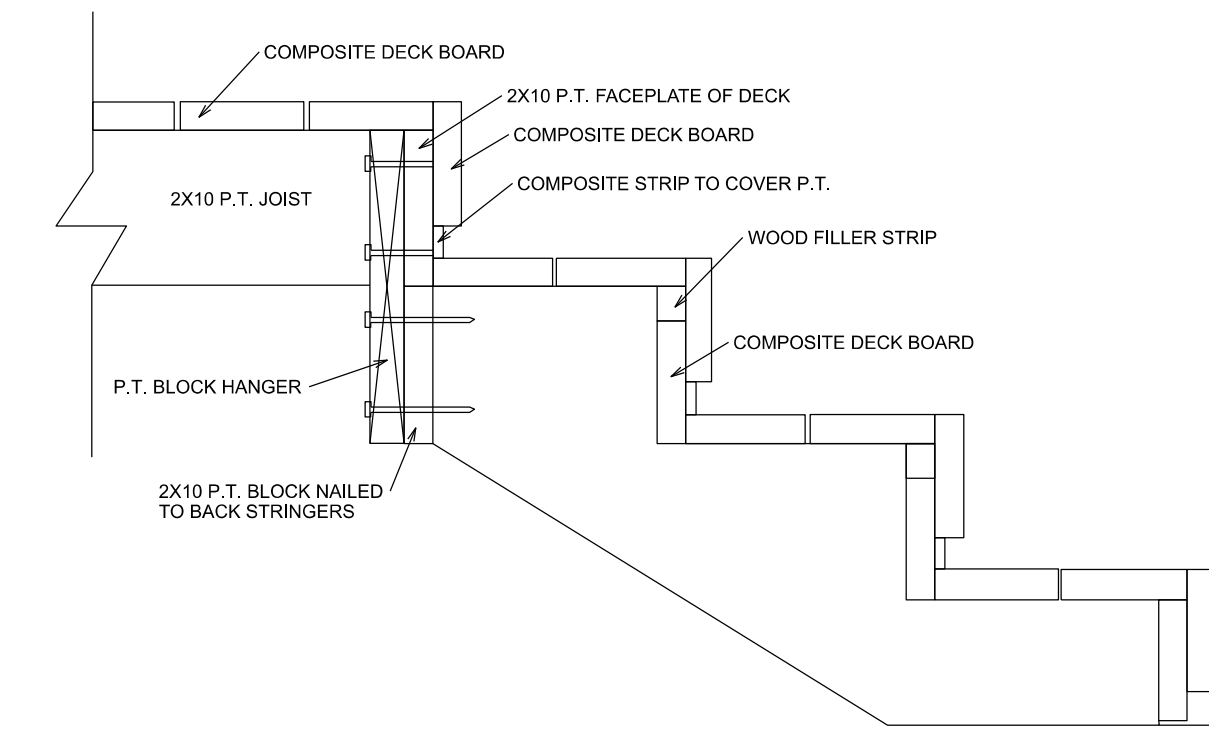
**DETAIL 1B: FOOTING AND POST**  
NOT TO SCALE



**DETAIL 3: KNEE BRACE CONNECTION**  
NOT TO SCALE



**DETAIL 4: GUARD RAIL CONNECTION**  
NOT TO SCALE



**DETAIL 5: STAIR DETAIL**  
NOT TO SCALE

**NOTES:**

- A) SIMPSON ABU66RZ ROUGH CUT 6X6 ADJUSTABLE POST BASE - ZMAX FINISH
- B) LSSJ ZMAX FACE-MOUNT ADJUSTABLE LIGHT SLOPEABLE/SKEWABLE JACK HANGER FOR 6X10 NOMINAL LUMBER
- C) 3,000 PSI CONCRETE 2'X2' FOOTING

